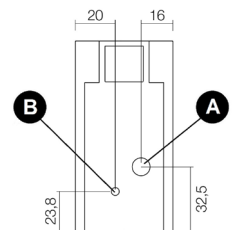
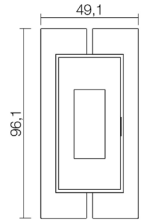
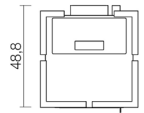




Nominal power	kW	8,5
Reduced power	kW	2,3
Nominal water useful power	kW	-
Reduced water useful power	kW	-
Nominal efficiency	%	88,9
Reduced efficiency	%	92,2
Heating volume (min-max)	m ³	55 - 206
Nominal CO at 13% O ₂	%	0,014
Reduced CO at 13% O ₂	%	0,032
Nominal dust content at 13% O ₂	mg/Nm ³	29,4
Boiler capacity (H ₂ O)	l	-
Hopper capacity	kg	18
Combustible		Pellet ø6
Hourly consumption (min-max)	kg/h	0,52 - 1,98
Autonomy (min-max)	h	9,1 - 34,6
Ignition electrical absorption (max)	W	346
Operating electrical absorption (max)	W	47
Supply and frequency	V - Hz	230 - 50
Chimney flue depression	Pa	11,6
Exhaust diameter	mm	80
Combustion air inlet diameter	mm	60
Mass of smoke (min-max)	g/sec	2,22 - 4,72
Exhaust fumes temperature (max)	°C	208,8
Net weight	kg	89
Gross weight	kg	99
Exhaust fumes	see	A
Hole combustion air inlet	see	B
Ducting outlet	see	-



Art. 15A B-VG 2015
BImSchV 2015
Regensburg
München
Stuttgart
Aachen



A+

PLUS



Sealed chamber



Cast iron burning pot



Overheating protection



Comfort mode



Wi-Fi kit (optional)



Remote control



Daily weekly programming



Connection to the external thermostat

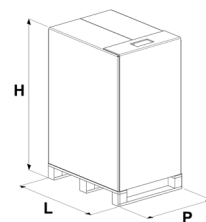


Back exhaust

MATCH

7015043		Anthracite steel	EAN 8033123616683
7015041		White steel	EAN 8033123616669
7015042		Light bronze steel	EAN 8033123616676
7015040		Red steel	EAN 8033123616652
7015039		Silver steel	EAN 8033123616645

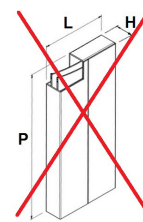
STOVE PACKING



L (cm)	H (cm)	P (cm)
80	114,3	60

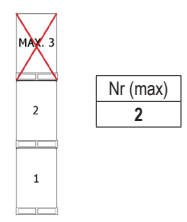
VOLUME (m ³)
0,55

LINING PACKING



L (cm)	H (cm)	P (cm)
-	-	-

STOCKING



TRANSPORT

