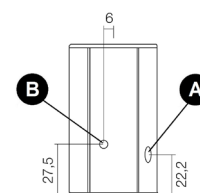
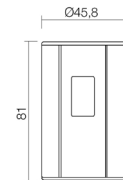
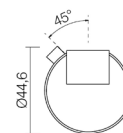




Nominal power	kW	6,5
Reduced power	kW	2,4
Nominal water useful power	kW	-
Reduced water useful power	kW	-
Nominal efficiency	%	91
Reduced efficiency	%	94,5
Heating volume (min-max)	m ³	58 - 156
Nominal CO at 13% O ₂	%	0,009
Reduced CO at 13% O ₂	%	0,008
Nominal dust content at 13% O ₂	mg/Nm ³	13
Boiler capacity (H ₂ O)	l	-
Hopper capacity	kg	12
Combustible		Pellet ø6
Hourly consumption (min-max)	kg/h	0,5 - 1,5
Autonomy (min-max)	h	8 - 24
Ignition electrical absorption (max)	W	320
Operating electrical absorption (max)	W	30
Supply and frequency	V - Hz	230 - 50
Chimney flue depression	Pa	12
Exhaust diameter	mm	80
Combustion air inlet diameter	mm	60
Mass of smoke (min-max)	g/sec	2 - 3,5
Exhaust fumes temperature (max)	°C	179
Net weight	kg	64
Gross weight	kg	74
Exhaust fumes	see	A
Hole combustion air inlet	see	B
Ducting outlet	see	-



Art. 15A B-VG 2015
BImSchV 2015
Regensburg
München
Stuttgart
Aachen



MATCH

7016101	NEUTRAL STRUCTURE	EAN 8033123618281
6917022	Anthracite steel	EAN 8033123618533
6917020	White steel	EAN 8033123618519
6917023	Chrome steel	EAN 8033123618540
6917024	Light bronze steel	EAN 8033123618557
6917019	Red steel	EAN 8033123618502
6917021	Silver steel	EAN 8033123618526

PLUS



Sealed chamber



Cast iron burning pot



Overheating protection



Burnproof handle



Comfort mode



Wi-Fi kit (optional)



Remote control



Daily weekly programming

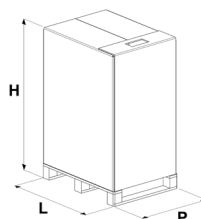


Connection to the external thermostat



Back exhaust

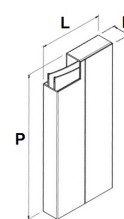
STOVE PACKING



L (cm)	H (cm)	P (cm)
80	101,3	60

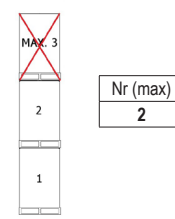
VOLUME (m ³)
0,49

LINING PACKING



	L (cm)	H (cm)	P (cm)
steel	25	8	86

STOCKING



TRANSPORT

