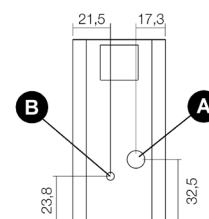
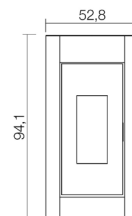
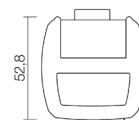


KRISS³ - 8,5 Kw

PELLET AIR - Pellet stoves



| | | |
|--|--------------------|-------------|
| Nominal power | kW | 8,5 |
| Reduced power | kW | 2,3 |
| Nominal water useful power | kW | - |
| Reduced water useful power | kW | - |
| Nominal efficiency | % | 88,9 |
| Reduced efficiency | % | 92,2 |
| Heating volume (min-max) | m ³ | 55 - 206 |
| Nominal CO at 13% O ₂ | % | 0,014 |
| Reduced CO at 13% O ₂ | % | 0,032 |
| Nominal dust content at 13% O ₂ | mg/Nm ³ | 29,4 |
| Boiler capacity (H ₂ O) | l | - |
| Hopper capacity | kg | 18 |
| Combustible | | Pellet ø6 |
| Hourly consumption (min-max) | kg/h | 0,52 - 1,98 |
| Autonomy (min-max) | h | 9,1 - 34,6 |
| Ignition electrical absorption (max) | W | 346 |
| Operating electrical absorption (max) | W | 47 |
| Supply and frequency | V - Hz | 230 - 50 |
| Chimney flue depression | Pa | 11,6 |
| Exhaust diameter | mm | 80 |
| Combustion air inlet diameter | mm | 60 |
| Mass of smoke (min-max) | g/sec | 2,22 - 4,72 |
| Exhaust fumes temperature (max) | °C | 208,8 |
| Net weight | kg | 88 |
| Gross weight | kg | 98 |
| Exhaust fumes | see | A |
| Hole combustion air inlet | see | B |
| Ducting outlet | see | - |



Art. 15A B-VG 2015
BImSchV 2015
Regensburg
München
Stuttgart
Aachen



A+

PLUS



Cast iron door



Overheating protection



Remote control



Back exhaust



Sealed chamber



Comfort mode



Daily weekly programming



Cast iron burning pot



Wi-Fi kit (optional)

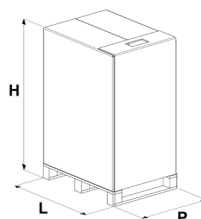


Connection to the external thermostat

MATCH

| | | | |
|---------|--|--------------------|-------------------|
| 7015035 | | Anthracite steel | EAN 8033123616607 |
| 7015036 | | White steel | EAN 8033123616614 |
| 7015034 | | Light bronze steel | EAN 8033123616591 |
| 7015033 | | Red steel | EAN 8033123616584 |

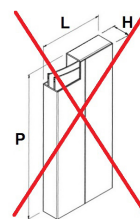
STOVE PACKING



| L (cm) | H (cm) | P (cm) |
|--------|--------|--------|
| 80 | 114,3 | 60 |

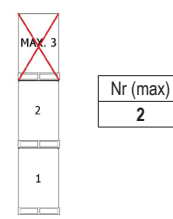
| |
|--------------------------|
| VOLUME (m ³) |
| 0,55 |

LINING PACKING



| L (cm) | H (cm) | P (cm) |
|--------|--------|--------|
| - | - | - |

STOCKING



TRANSPORT

