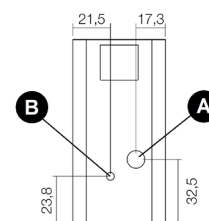
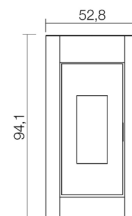
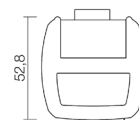


KRISS³ - 7 Kw

PELLET AIR - Pellet stoves



Nominal power	kW	7
Reduced power	kW	2,3
Nominal water useful power	kW	-
Reduced water useful power	kW	-
Nominal efficiency	%	90
Reduced efficiency	%	92,2
Heating volume (min-max)	m ³	55 - 170
Nominal CO at 13% O ₂	%	0,011
Reduced CO at 13% O ₂	%	0,032
Nominal dust content at 13% O ₂	mg/Nm ³	27,5
Boiler capacity (H ₂ O)	l	-
Hopper capacity	kg	18
Combustible		Pellet ø6
Hourly consumption (min-max)	kg/h	0,52 - 1,63
Autonomy (min-max)	h	11 - 34,6
Ignition electrical absorption (max)	W	364
Operating electrical absorption (max)	W	46
Supply and frequency	V - Hz	230 - 50
Chimney flue depression	Pa	11,7
Exhaust diameter	mm	80
Combustion air inlet diameter	mm	60
Mass of smoke (min-max)	g/sec	2,22 - 4,24
Exhaust fumes temperature (max)	°C	180,8
Net weight	kg	88
Gross weight	kg	98
Exhaust fumes	see	A
Hole combustion air inlet	see	B
Ducting outlet	see	-



Art. 15A B-VG 2015
BImSchV 2015
Regensburg
München
Stuttgart
Aachen



A+

PLUS



Cast iron door



Sealed chamber



Cast iron burning pot



Overheating protection



Comfort mode



Wi-Fi kit (optional)



Remote control



Daily weekly programming



Connection to the external thermostat

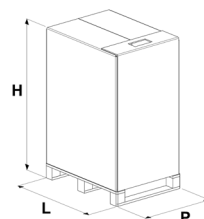


Back exhaust

MATCH

7015031		Anthracite steel	EAN 8033123616492
7015032		White steel	EAN 8033123616577
7015030		Light bronze steel	EAN 8033123616485
7015029		Red steel	EAN 8033123616478

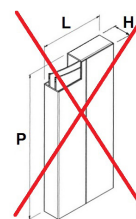
STOVE PACKING



L (cm)	H (cm)	P (cm)
80	114,3	60

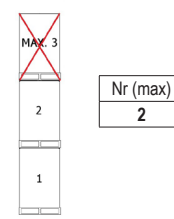
VOLUME (m ³)	0,55
--------------------------	------

LINING PACKING



L (cm)	H (cm)	P (cm)
-	-	-

STOCKING



TRANSPORT

