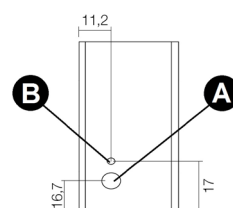
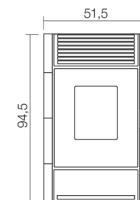
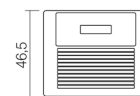


CRISTAL - 8,5 Kw

PELLET AIR - Pellet stoves



Nominal power	kW	8,5
Reduced power	kW	2,3
Nominal water useful power	kW	-
Reduced water useful power	kW	-
Nominal efficiency	%	88
Reduced efficiency	%	90
Heating volume (min-max)	m³	55 - 204
Nominal CO at 13% O ₂	%	0,006
Reduced CO at 13% O ₂	%	0,031
Nominal dust content at 13% O ₂	mg/Nm³	11
Boiler capacity (H ₂ O)	l	-
Hopper capacity	kg	18
Combustible		Pellet ø6
Hourly consumption (min-max)	kg/h	0,5 - 1,90
Autonomy (min-max)	h	9,5 - 36
Ignition electrical absorption (max)	W	364
Operating electrical absorption (max)	W	59
Supply and frequency	V - Hz	230 - 50
Chimney flue depression	Pa	12
Exhaust diameter	mm	80
Combustion air inlet diameter	mm	40
Mass of smoke (min-max)	g/sec	3,4 - 5,6
Exhaust fumes temperature (max)	°C	200
Net weight	kg	80
Gross weight	kg	90
Exhaust fumes	see	A
Hole combustion air inlet	see	B
Ducting outlet	see	-



Art. 15A B-VG 2015
BImSchV 2015
Regensburg
München
Stuttgart
Aachen



MATCH

7015068		Anthracite steel	EAN 8033123617383
7015067		White steel	EAN 8033123617376
7015066		Red steel	EAN 8033123617369

PLUS



Stainless steel burning pot AISI



Overheating protection



Burnproof handle



Comfort mode



Remote control



Daily weekly programming

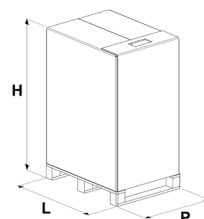


Connection to the room thermostat



Back exhaust

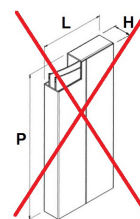
STOVE PACKING



L (cm)	H (cm)	P (cm)
80	114,3	60

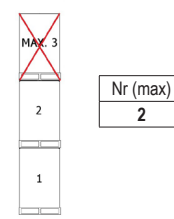
VOLUME (m ³)
0,55

LINING PACKING



L (cm)	H (cm)	P (cm)
-	-	-

STOCKING



TRANSPORT

